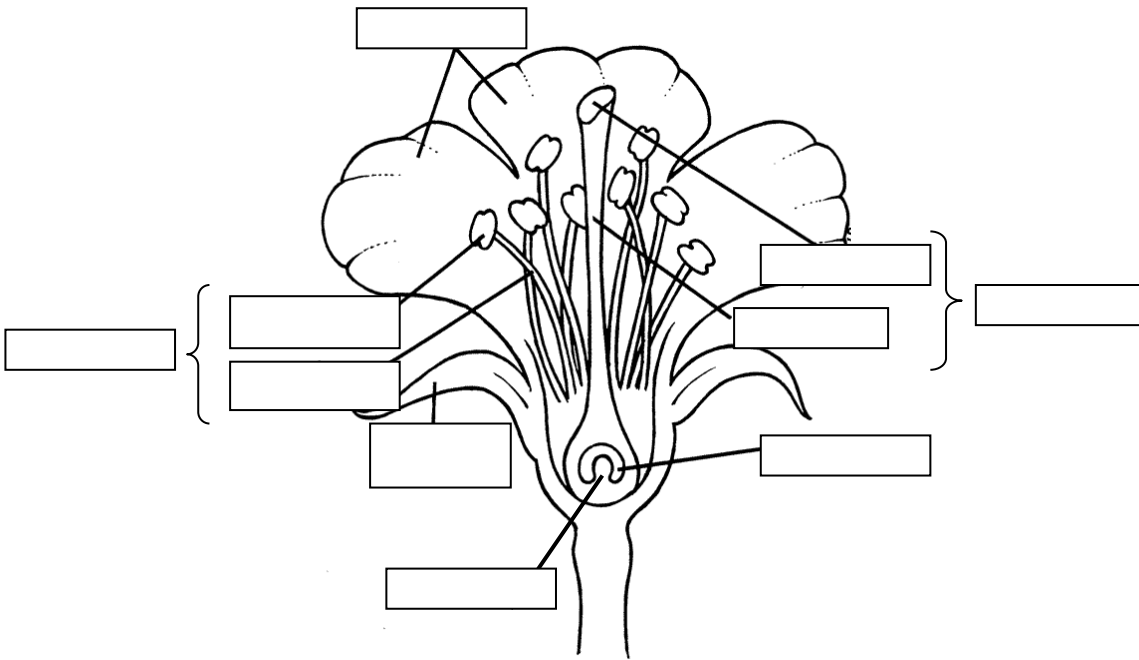


Parts of a Flower Notes



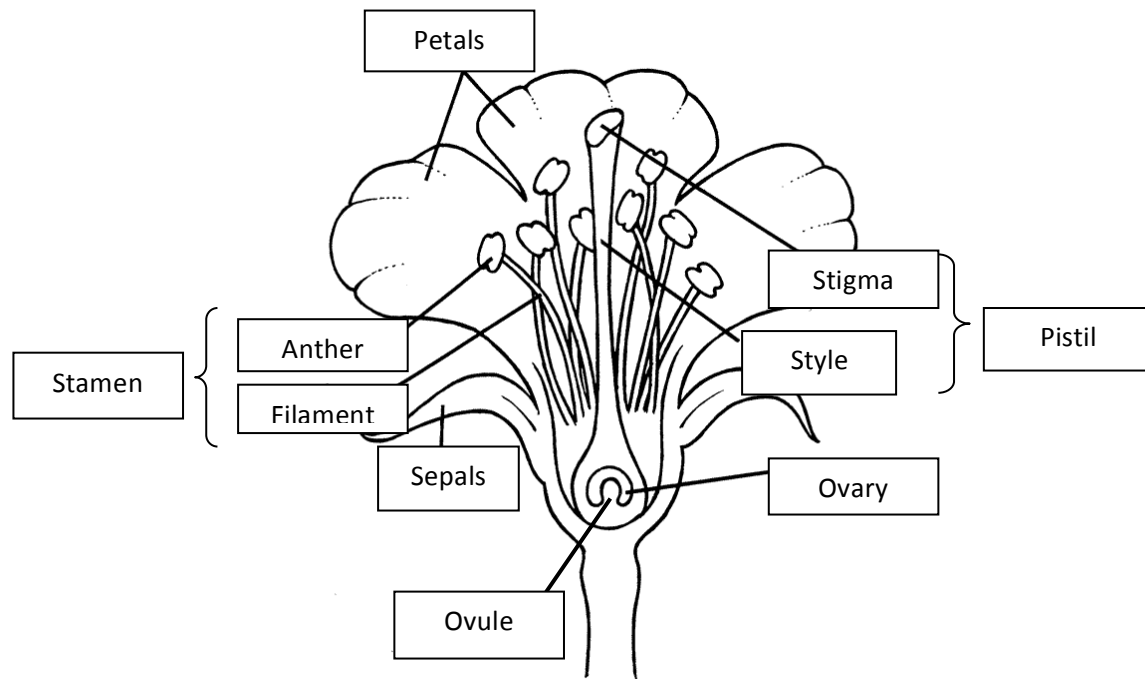
Description of Flower Parts:

- _____ -The female part of a flower
- _____ -The male part of the flower
- _____ - Located on top of the stamen, pollen is created and stored here
- _____ -Located on the stamen, thread-like stalk that supports anther
- _____ - Sticky surface on top of pistil that traps pollen
- _____ - Tube-like structure that connects stigma to ovary
- _____ -Found at bottom of flower, contains ovules. (Turns into fruit)
- _____ - Female sex cells that gets fertilized by pollen
- _____ - Colorful part that surrounds reproductive structures
- _____ - Green petal-like parts at the base of the flower for protection
- _____ -male sex cell, normally a powder found on the anther.

Perfect Flower = _____

Imperfect Flower= _____

Parts of a Flower Notes



Description of Flower Parts:

_____Pistil_____ -The female part of a flower

_____Stamen_____ -The male part of the flower

_____Anther____ - Located on top of the stamen, pollen is created and stored here

_____Filament___ -Located on the stamen, thread-like stalk that supports anther

_____Stigma_____ - Sticky surface on top of pistil that traps pollen

_____Style_____ - Tube-like structure that connects stigma to ovary

_____Ovary_____ -Found at bottom of flower, contains ovules. (Turns into fruit)

_____Ovules_____ - Female sex cells that gets fertilized by pollen

_____Petals_____ - Colorful part that surrounds reproductive structures

_____Sepals_____ - Green petal-like parts at the base of the flower for protection

_____Pollen_____ -male sex cell, normally a powder found on the anther.

Perfect Flower = Both male and female reproductive parts are found on a flower.

Imperfect Flower= Only male or female parts are found on a flower.